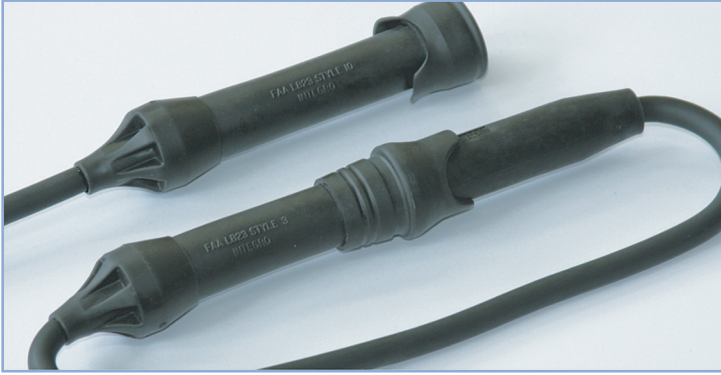


L823 "Complete Kit"

Integro
Yes, we have it.

L-823 "Complete Kit" Primary Connector Kits - Style 3 and Style 10



Ordering Information: **11805 - XX**
(XX - Size Code)

FAA Listing	Integro Part #	Cable	Min OD	Max OD
L-823	11805-01	8 AWG	.320"	.430"
Style 3 & 10	11805-04	6 AWG	.320"	.430"

Each Primary Connector Kit includes:

- Style 3 male pin
- Style 3 male housing
- Instruction sheet
- Style 10 female receptacle
- Style 10 male housing
- Paper wipe for cleaning

Application

Integro "Complete Kit" Primary Connector Kits are used to install Isolation Transformers into series circuits, and to make serviceable splice connections or test points in L-824 Airport Lighting Cable on primary power circuits.

Where They are Used

Integro "Complete Kit" Primary Connector Kits are used on all installations with our transformers and are therefore installed in all the same regions.

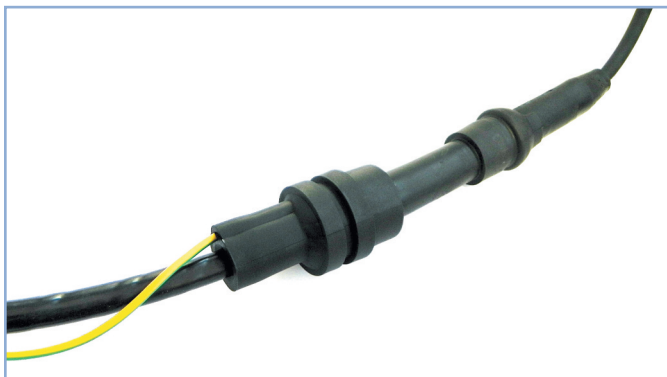
Approvals

Integro "Complete Kit" Primary Connector Kits are approved to the FAA L-823 specification and are certified by ITS Testing Labs to FAA Advisory Circular 150/5345-26.

Design

Integro "Complete Kit" Primary Connector Kits are molded in thermoplastic rubber for superior dielectric strength, and to ensure watertight connections in the field. Each molded kit housing is filled with insulating silicone to fill voids. They are rated 25 Amps and 5,000 Volts.

"Complete Kit" for shielded cable



Insulated Grounding Wire

Integro Kit Part #	Wire Gauge	Cable OD (inch)	Insulation Wire OD (inch)
11869-01	8 AWG 6mm ²	.375" - .450"	.275" - .325"
11869-02	8 AWG	.450" - .550"	.325" - .370"
11869-03	8 AWG	.550" - .650"	.370" - .470"
11869-04	8 AWG	.650" - .700"	.370" - .470"
11869-05	6 AWG	.650" - .700"	.370" - .470"

"Complete Kit" for shielded cable



Copper Grounding Wire

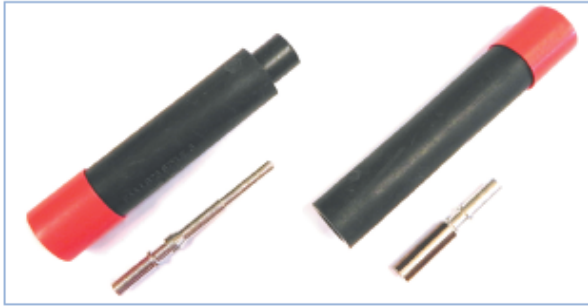
Integro Kit Part #	Wire Gauge	Cable OD (inch)	Insulation Wire OD (inch)
11847-01	8 AWG 6mm ²	.375" - .450"	.275" - .325"
11847-02	8 AWG	.450" - .550"	.325" - .370"
11847-03	8 AWG	.550" - .650"	.370" - .470"
11847-04	8 AWG	.650" - .700"	.370" - .470"
11847-05	6 AWG	.650" - .700"	.370" - .470"

Note: Available in color for circuit identification. Contact factory for details.

Each Primary Connector Kit includes:

- Style 3 male pin
- Style 3 male housing
- Instruction sheet
- Wire
- Style 10 female receptacle
- Style 10 female housing
- Paper wipe for cleaning
- Grounded boot

L-823 Primary Connector Kits - Style 3 and Style 10



Application

Integro Primary Connector Kits are used to install Isolation Transformers into series circuits, and to make serviceable splice connections or test points in L-824 Airport Lighting Cable on primary power circuits.

Where They are Used

Integro Primary Connector Kits are used on all installations with our transformers and are therefore installed in all the same regions.

Approvals

Integro Primary Connector Kits are approved to the FAA L-823 specification and are certified by Intertek Testing Labs to FAA Advisory Circular 150/5345-26.

Design

Integro Primary Connector Kits are molded in thermoplastic rubber for superior dielectric strength, and to ensure watertight connections in the field. Each molded kit housing is filled with insulating silicone to fill voids. They are rated 25 Amps and 5,000 Volts.

Ordering Information: **11174 - XX**
(XX - Size Code)

FAA Listing	Integro Part #	Cable	Min OD	Max OD
Style 3 & 10	11174-01	8 AWG	.320"	.430"
	11174-05	8 AWG	.460"	.585"
	11174-04	6 AWG	.320"	.430"
	11174-02	6 AWG	.460"	.585"

Each Primary Connector Kit Includes:

- Style 3 male Pin
- Style 3 male Housing
- Instruction Sheet
- Style 10 female Receptacle
- Style 10 female Housing
- Paper Wipe for cleaning

"Complete Kit"

in **COLOR** for circuit identification!



Ordering Information: **11805 - XX - COLOR**
(XX - Size Code)

FAA Listing	Integro Part #	Cable	Min OD	Max OD
L-823	11805-01	8 AWG	.320"	.430"
Style 3 & 10	11805-04	6 AWG	.320"	.430"

Now offered in **COLOR!**

11805-XX-BLU	11805-XX-RED
11805-XX-GRN	11805-XX-WHT
11805-XX-ORG	11805-XX-YLW

Note: More color options available. Contact factory for details.