

Ground Access Wells



GAW121212HD



GAW121218HD



GAW121224HD*



GAW132418HD

Light Weight Polymer Concrete

Part No.	Dimensions	Approx. Each Wt. (lbs.)
GAW121212HD	12" x 12" x 12" deep	52
GAW121218HD	12" x 12" x 18" deep	57
GAW121224HD*	12" x 12" x 24" deep	67
GAW132418HD	13" x 24" x 18" deep	97-1/2

- Lid & Grade Ring manufactured from high density polymer concrete.
 - Body manufactured from sheet molding compound for exceptional toughness and reduced weight.
 - Comes with load category Tier 15 rated covers.
 - Suitable for installation and use through a temperature range of -40°C to +90°C.
 - Gray color.
- * GAW121224HD is a two piece stackable, each 12" high.

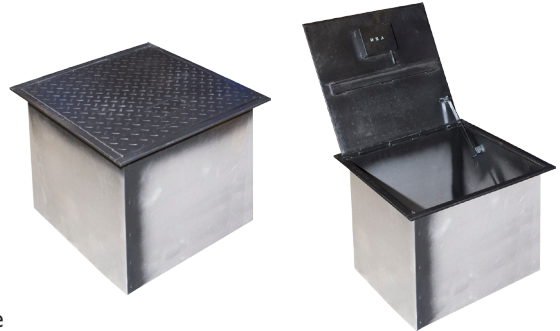
ANSI/SCTE 77 Specifications

Class Vehicle	GVW (lb)	Max Wheel Load (lb)	Design Load	Test Load	Load Category
Truck, up to Class 7	33000	13200	15000#	22500	Tier 15
Tier 15 boxes and covers may be placed in locations that may see occasional non-deliberate heavy vehicles.					
No polymer concrete box or cover should be placed in a full traffic, H-20, application. Meets W.U.C. 3.6.					

Ground Access Wells

High Security Wells

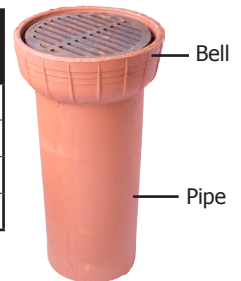
Part No.	Dimensions	Approx. Each Wt. (lbs.)
GAW121212TDLH	12" x 12" x 12" deep	40
GAW181818TDLH	18" x 18" x 18" deep	80
GAW242424TDLH	24" x 24" x 24" deep	140
GAW363636TDLH	36" x 36" x 36" deep	300



- The Harger traffic rated security wells can support vehicle loading up to AAS-HTO H-20 rating of 32,000 lbs. (14,500 kgs) per axle. This rating refers to the ability of a roadway to safely accommodate 3-4 axle vehicles, such as a large semi-truck and trailer.
- 3/8" steel top cover with 120 degree opening latch.
- Must be shipped by truck only.

Tile Well with Grated Cover

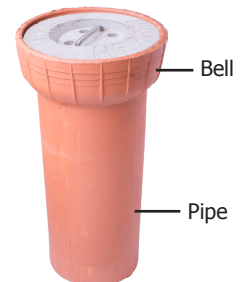
Part No.	Nominal Size	Length	Bell I.D. Minimum	Pipe I.D. (Approx.)	Cover Type	Approx. Each Wt. (lbs.)
358T	8"	24"	10-1/2"	8"	Cast Iron Grated	57
360T	10"	24"	12-3/4"	10"	Cast Iron Grated	83
362T	12"	24"	15-1/8"	12"	Cast Iron Grated	140
368T	18"	24"	22-1/4"	18"	Cast Iron Grated	222



- For use in non-vehicular traffic areas.
- Available in 8", 10", 12" and 18" diameters.
- Diameter is measured on inside diameter of access well bottom.
- Must be shipped by truck only.

Tile Well with Concrete Cover

Part No.	Nominal Size	Length	Bell I.D. Minimum	Pipe I.D. (Approx.)	Cover Type	Approx. Each Wt. (lbs.)
358TC	8"	24"	10-1/2"	8"	Concrete	70
360TC	10"	24"	12-3/4"	10"	Concrete	97
362TC	12"	24"	15-1/8"	12"	Concrete	151



- For use in non-vehicular traffic areas.
- Available in 8", 10" and 12" diameters.
- Diameter is measured on inside diameter of access well bottom.
- Must be shipped by truck only.

APPLICATION NOTES:

- Provides ready access to ground electrode for testing and inspection purposes.
- To prevent displacement by frost, the access well must be longer than the frost line is deep.

Ground Access Wells



360PBG



360PBS



360PBSTP

PVC Belled Hub Wells with Cover

Part No.	Diameter	Length	Cover Type	Approx. Each Wt. (lbs.)
360PBG	10"	24"	Cast Iron Grated	20
360PBS	10"	24"	Flat Steel	19
360PBSTP	10"	24"	Tamper Proof	27
362PBG	12"	24"	Cast Iron Grated	28
362PBS	12"	24"	Flat Steel	26
362PBSTP	12"	24"	Tamper Proof	28
368PBG	18"	24"	Cast Iron Grated	71
368PBS	18"	24"	Flat Steel	58
368PBSTP	18"	24"	Tamper Proof	58

- For use in non-vehicular traffic areas.
- Available in 10", 12" and 18" diameters.
- Schedule 40 PVC wells feature a belled hub.
- Flat steel covers are 3/16" thick commercial grade steel with a zinc/ultraseal coating.
- Other covers available. See page 45.

APPLICATION NOTES:

- Provides ready access to ground electrode for testing and inspection purposes.
- To prevent displacement by frost, the access well must be longer than the frost line is deep.

Ground Access Wells

PVC Well with Cover

Part No.	Diameter	Length	Cover Type	Approx. Each Wt. (lbs.)
358PP	8"	24"	Plastic	12
358PS	8"	24"	Flat Steel	14
360PP	10"	24"	Plastic	15
360PS	10"	24"	Flat Steel	19
362PS	12"	24"	Flat Steel	22

- For use in non-vehicular traffic areas.
- Schedule 40 PVC well.
- Steel covers are 3/16" thick commercial grade steel with a zinc/ultraseal coating.
- Plastic covers are manufactured from High Density Polyethylene.



HDPE Well with Cover

Part No.	Diameter	Length	Cover Type	Approx. Each Wt. (lbs.)
GAW910	9"	10-1/4"	HDPE	4-1/2

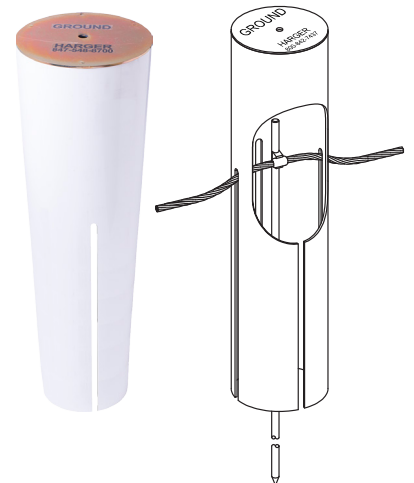
- For use in non-vehicular traffic areas.
- Molded High Density Polyethylene well features a 9" diameter "twist lock" cover with locking bolt.
- Static vertical load rating = 350 PSF.
- 2 knock outs (mouse holes) allow for routing conductor to the inside.



PVC Slotted Well with Cover

Part No.	Diameter	Length	Cover Type	Approx. Each Wt. (lbs.)
358P42	8"	42"	Flat Steel	19
358PP42	8"	42"	Plastic	17
360P42	10"	42"	Flat Steel	30
360PP42	10"	42"	Plastic	26

- For use in non-vehicular traffic areas.
- Schedule 40 PVC well.
- Steel covers are 3/16" thick commercial grade steel with a zinc/ultraseal coating.
- Plastic covers are manufactured from High Density Polyethylene.
- Four 27" slots allow for ground electrode connections to be made before installation of test well.



APPLICATION NOTES:

- Provides ready access to ground electrode for testing and inspection purposes.
- To prevent displacement by frost, the access well must be longer than the frost line is deep.

Ground Access Wells

Access Well with 10" Cast Iron Cover

Part No.	Diameter	Length	Cover Type	Approx. Each Wt. (lbs.)
360P36CILS80	10"	36"	Cast Iron	61
360P36CILS80TP	10"	36"	Tamper Proof	61
360P42CILS80	10"	42"	Cast Iron	67
360P42CILS80TP	10"	42"	Tamper Proof	67



- For use in non-vehicular traffic areas.
- 10" diameter Schedule 80 PVC well.
- Available in 36" and 42" lengths.
- Four 27" slots allow for ground electrode connections to be made before installation of test well.
- Cast iron cover fits into cast iron ring for extra support.

Access Well with 12" Cast Iron Cover

Part No.	Diameter	Length	Cover Type	Approx. Each Wt. (lbs.)
362PS12CILS80	12"	12"	Cast Iron	42
362PS24CILS80	12"	24"	Cast Iron	61
362PS30CILS80	12"	30"	Cast Iron	68



- For use in non-vehicular traffic areas.
- 12" diameter Schedule 80 PVC well.
- Available in 12", 24" and 30" lengths.
- Cast iron cover fits into cast iron ring for extra support.

APPLICATION NOTES:

- Provides ready access to ground electrode for testing and inspection purposes.
- To prevent displacement by frost, the access well must be longer than the frost line is deep.