

Primary Cable Assemblies

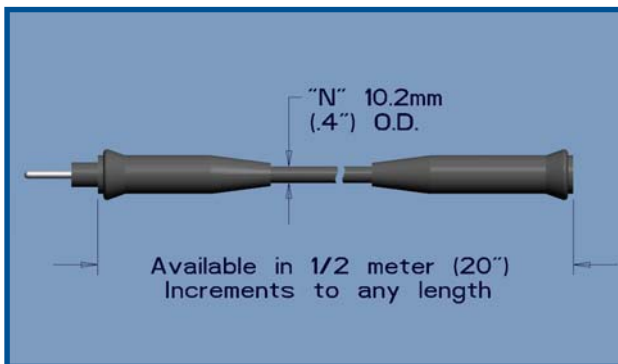


Airport Equipment
Qualified to
FAA Specification
AC 150/5345-26

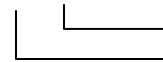
- All connectors are molded on the cable for strong waterproof joints.
- 25 amps
- 5000 Volts to earth
- Every cable assembly is continuity checked prior to shipment
- Cable assemblies are conveniently coiled and shipped in boxes or fibre drums (contact factory for reels or other arrangements.)

CATALOG NUMBER CODE

"Standard" CABLE



54M _ - _ , _



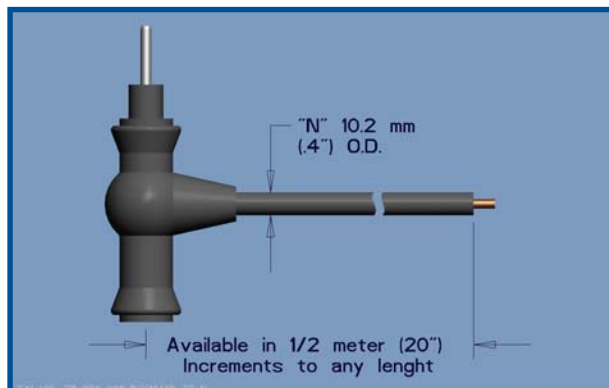
(Length in meters)

Connector Configuration

- P** - Plug (male) connector Style 2
- R** - Receptacle (female) connector Style 9.

- If both ends of the cable are to be terminated use two letters here
- If only one end is to be terminated, select the correct configuration and use only one letter

"T" CABLE



54MT _ - _ , _



(Length in meters)

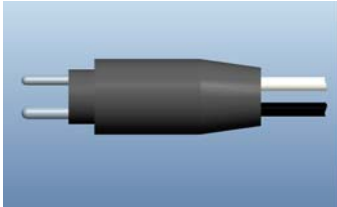
Type of Cable

- N** -Single #8 AWG (8.4mm²) Type C thermoplastic insulated cable rated 5000V, 25 amp, 90°C (19 strands)

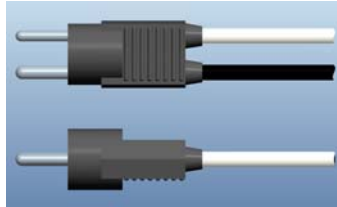
Secondary Cable Assemblies



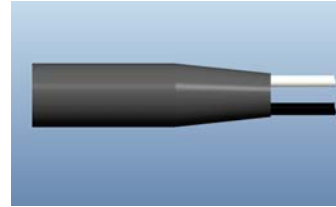
Airport Equipment
Qualified to
FAA Specification
AC 150/5345-26



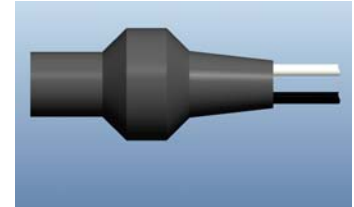
Style 1



Style 6



Style 7



Style 8

CATALOG NUMBER CODE

95M - - - , - -
length in meters

Connector (s) Configuration

P FAA L823 Style 1 Plug

P6 FAA L823 Style 6 Plug

R7 FAA L823 Style 7 Receptacle

R8 FAA L823 Style 8 Receptacle

PR8 FAA L823 Style 1 Plug and Style 8 Receptacle Extension Lead Cable

F - Two individual #12 AWG (3,3mm²) thermoplastic insulated, waterproof wires, rated 600 volts between contacts, 1500 volts to earth, 20 amp, 90°C. O.D. 4,7mm (.185")

G - 2/12 AWG (3,3mm²) thermoplastic insulated waterproof cable with overall jacket, rated 600 volts between contacts, 1500 volts to earth, 20 amp, 90°C. O.D. 12,7mm (.5")

H - Two individual #16 AWG (1,3mm²) thermoplastic insulated, waterproof wires, rated 600 volts between contacts, 1500 volts to earth, 20 amp, 90°C. O.D. 3,2mm (.125")

I - 2/16 AWG (1,3mm²) thermoplastic insulated waterproof cable with overall jacket, rated 600 volts between contacts, 1500 volts to earth, 20 amp, 90°C. O.D. 9,4mm (.37")

K - Two individual #14 AWG (2,1mm²) Teflon insulated wires, rated 600 volts between contacts, 1500 volts to earth, 20 amp, 200°C, wires certified to UL1199 and CSA1A/B

L - As K above except #16 AWG (1,3mm²)

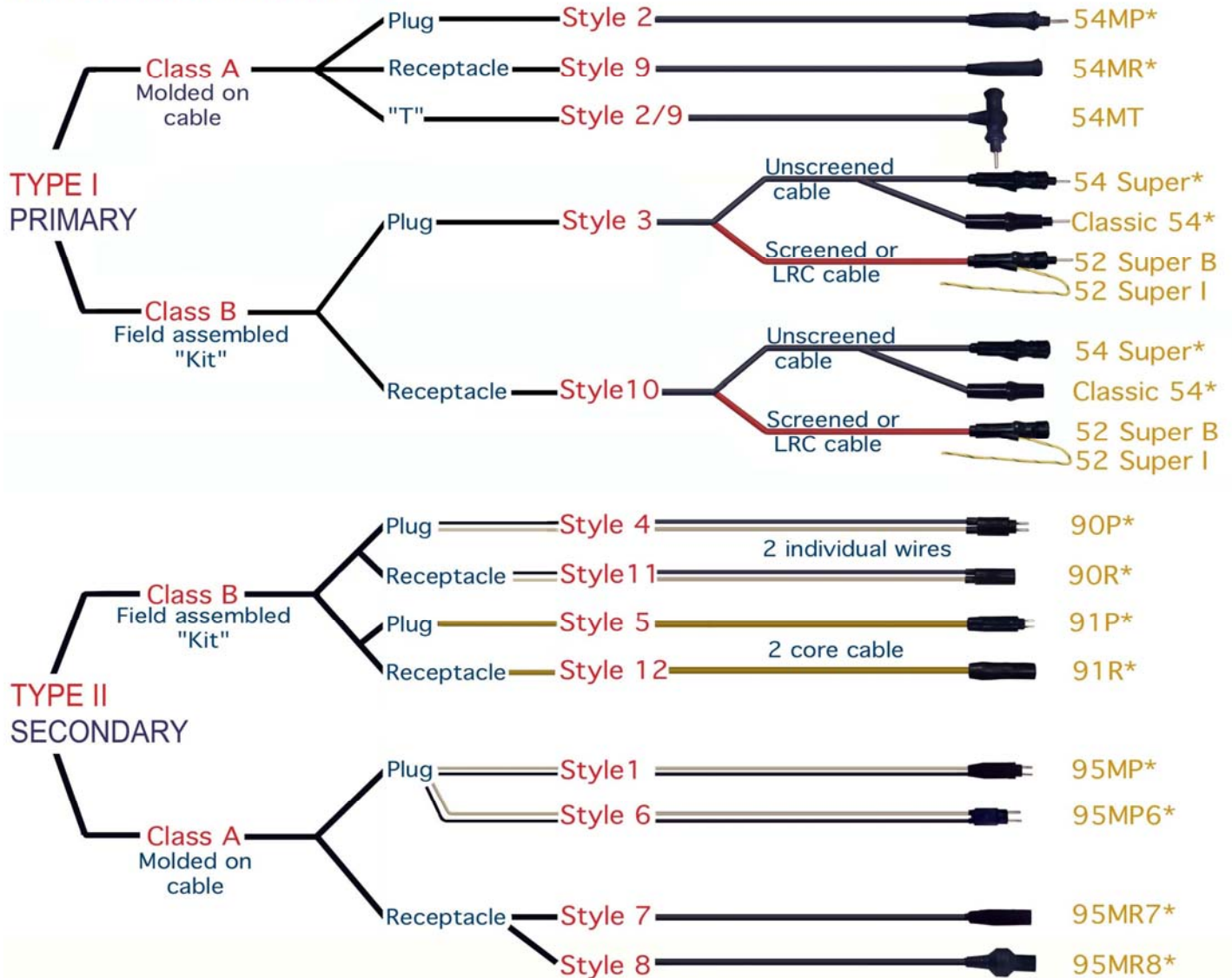
Available in 1/2 meter increments to any length.

AMERACE AIRPORT LIGHTING

Guide to FAA L823 Connectors

<http://www.amerace.com>

FAA DESIGNATIONS IN RED



The * symbol indicates the connector is certified by ETL, and listed in the FAA AC 150/5345-IV "Approved Airport Equipment".

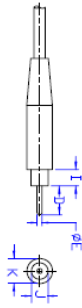
This list is updated monthly and may be downloaded from:

http://www.faa.gov/airports/resources/advisory_circulars/

AMERACE Guide to FAA Style Airfield Lighting Connectors

FAA TYPE I PRIMARY

Single Conductor, 25 Amps, 5000 Volts to Earth



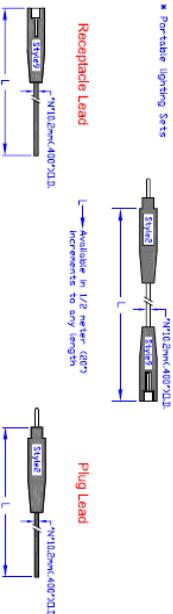
FAA INTERFACE DIMENSIONS

Extended from FAA Advisory Circular A/C 150/5345-26

CHECKLIST FOR FAA PERFORMANCE

DIMENSION	INCHES	CENTIMETERS
D	1.062 ± 0.015	2.697 ± 0.38
E	0.186 ± 0.001	0.472 ± 0.03
F	1.080 Min	2.743 Min
G	0.593 ± 0.03, -0.00	1.506 ± 0.28, -0.00
H	0.694 ± 0.00, -0.00	1.754 ± 0.23, -0.00
J	0.200 ± 0.00, -0.00	0.508 ± 0.00, -0.00
K	0.573 ± 0.00	1.455 ± 0.25
L	0.608 ± 0.00, -0.015	1.544 ± 0.00, -0.38
M		

Primary Cable Assemblies Series 54M



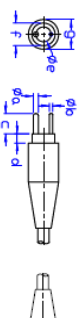
FAA CLASS B

Field Applied Connectors

AMERACE
A Division of Thomas & Betts
120 Nashdene Road
Scarborough, Ontario M1V 2W3
www.amerace.com
TEL: (416) 292-9782
FAX: (416) 292-1514

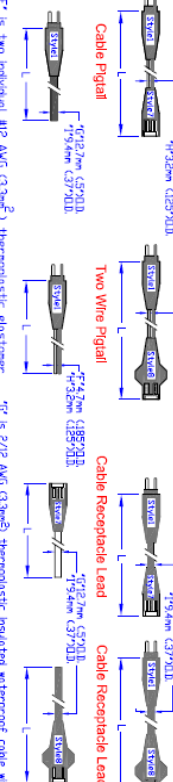
FAA TYPE II SECONDARY

Two Conductor, 20 Amps, 600 Volts Between Conductors, 1500 Volts to Earth

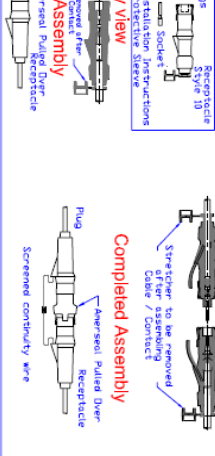
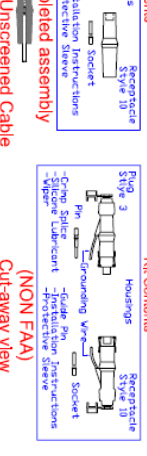


DIMENSION	INCHES	CENTIMETERS
1	0.152 ± 0.001	0.384 ± 0.025
2	0.425 ± 0.015, -0.00	1.067 ± 0.38, -0.00
3	0.425 ± 0.015, -0.00	1.067 ± 0.38, -0.00
4	0.152 ± 0.001	0.384 ± 0.025
5	0.152 ± 0.001	0.384 ± 0.025
6	0.152 ± 0.001	0.384 ± 0.025
7	0.152 ± 0.001	0.384 ± 0.025
8	0.152 ± 0.001	0.384 ± 0.025
9	0.152 ± 0.001	0.384 ± 0.025
10	0.152 ± 0.001	0.384 ± 0.025
11	0.152 ± 0.001	0.384 ± 0.025
12	0.152 ± 0.001	0.384 ± 0.025
13	0.152 ± 0.001	0.384 ± 0.025
14	0.152 ± 0.001	0.384 ± 0.025
15	0.152 ± 0.001	0.384 ± 0.025
16	0.152 ± 0.001	0.384 ± 0.025
17	0.152 ± 0.001	0.384 ± 0.025
18	0.152 ± 0.001	0.384 ± 0.025
19	0.152 ± 0.001	0.384 ± 0.025
20	0.152 ± 0.001	0.384 ± 0.025

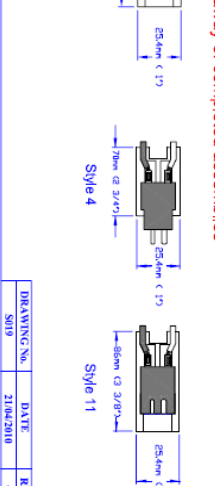
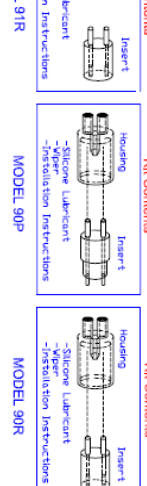
Secondary Cable Assemblies Series 95M



Primary Connector Kits



Secondary Connector Kits



DRAWING NO.	DATE	REV
8019	21/04/2010	4