



Primary Connector Kits

For Unscreened Cable

ELECTRICAL RATING

25 Amps
5000 Volts Insulation

Shipping

0.23Kg (0,5lb each)
11,5 Kg (25Lb)

Construction

EPDM Rubber
Every kit filled with silicone

SUGGESTED CRIMPING TOOLS

See Page 17

54 Super Kit (FAA L823 Style 3 Style 10)

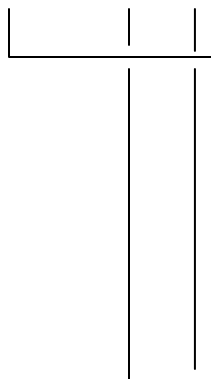


54 Classic Kit



CATALOG NUMBER CODE

54 Super E4—E4



Model Number

- 54 Super** Super Kit
- Added features
 - Amer-Seal
 - Super-Seal
 - Positive-Grip

54 Classic

Receptacle Housing Size

- Outside diameter of cable:*
- Select size code from Table 1.
- Wire size:*
- Select size code from Table 2.

Plug Housing Size

- Outside diameter of cable:*
- Select size code from Table 1.
- Wire size:*
- Select size code from Table 2.

Cable Diameter				Size Code
Metric		Imperial		
Min.	Max.	Min.	Max.	
5,0	6,6	0.195"	0.260"	B*
6,4	8,4	0.250"	0.330"	C
8,1	10,9	0.320"	0.430"	D
9,4	12,9	0.370"	0.507"	Z
10,7	14,9	0.420"	0.585"	E
14,6	19,9	0.575"	0.785"	F

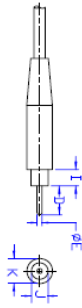
*54 Classic kit only -includes adapter

Wire Size and Type				
Concentric Stranded		Solid		Size Code
mm ²	AWG	mm ²	AWG	
4-6	10-12	4-6	8-10	6
10	8	10	6	4
16	6	16	4	3
-	4	-	-	2
-	2	-	-	1

AMERACE Guide to FAA Style Airfield Lighting Connectors

FAA TYPE I PRIMARY

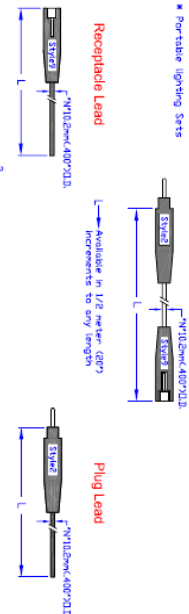
Single Conductor, 25 Amps, 5000 Volts to Earth



* Metal contact shall be recessed not more than 1/8 inch (0.318 cm) below inside face of receptacle and before splitting shall have an ID of 0.1888±0.01 inch (0.4778±0.025cm).

DIMENSION	INCHES	CENTIMETERS
D	1.062 ± 0.015	2.697 ± 0.38
E	0.186 ± 0.001	0.472 ± 0.03
F	1.080 Min	2.743 Min
G	0.593 ± 0.03, -0.00	1.506 ± 0.28, -0.00
H	0.634 ± 0.00, -0.00	1.594 ± 0.23, -0.00
I	0.500 ± 0.00, -0.01	1.270 ± 0.25, -0.13
J	0.573 ± 0.00	1.455 ± 0.25
K		1.544 ± 0.00, -0.38
L		
M		
N		
O		
P		
Q		
R		
S		
T		
U		
V		
W		
X		
Y		
Z		

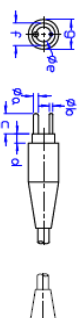
Primary Cable Assemblies Series 54M Single Wire Extension



CABLE IS Single 48 AWG (6mm²) Type C Thermoplastic elastomers, insulated, rated 300V, 25amp, 90°C (9 strands)

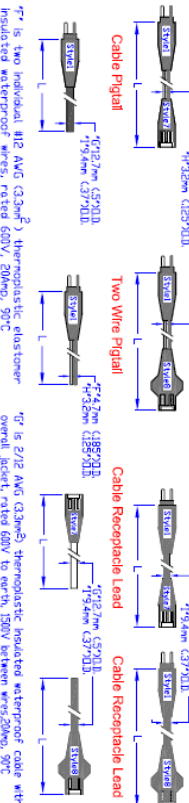
FAA TYPE II SECONDARY

Two Conductor, 20 Amps, 600 Volts Between Conductors, 1500 Volts to Earth



DIMENSION	INCHES	CENTIMETERS
A	0.532 ± 0.01	1.354 ± 0.25
B	0.625 ± 0.03, -0.00	1.587 ± 0.76, -0.00
C	0.425 ± 0.00, -0.00	1.080 ± 0.00, -0.00
D	0.700 ± 0.00, -0.00	1.778 ± 0.00, -0.00
E	0.700 ± 0.00, -0.00	1.778 ± 0.00, -0.00
F	0.157 ± 0.00	0.399 ± 0.03
G	0.641 Min	1.628 Min
H	0.328 ± 0.00, -0.05	0.839 ± 0.00, -0.038
I	0.524 ± 0.00	1.330 ± 0.00
J	0.500 ± 0.00, -0.01	1.270 ± 0.25, -0.13
K	0.573 ± 0.00	1.455 ± 0.25
L	1.500 ± 0.00	3.810 ± 0.00
M	1.500 ± 0.00	3.810 ± 0.00
N	1.500 ± 0.00	3.810 ± 0.00
O	1.500 ± 0.00	3.810 ± 0.00
P	1.500 ± 0.00	3.810 ± 0.00
Q	1.500 ± 0.00	3.810 ± 0.00
R	1.500 ± 0.00	3.810 ± 0.00
S	1.500 ± 0.00	3.810 ± 0.00
T	1.500 ± 0.00	3.810 ± 0.00
U	1.500 ± 0.00	3.810 ± 0.00
V	1.500 ± 0.00	3.810 ± 0.00
W	1.500 ± 0.00	3.810 ± 0.00
X	1.500 ± 0.00	3.810 ± 0.00
Y	1.500 ± 0.00	3.810 ± 0.00
Z	1.500 ± 0.00	3.810 ± 0.00

Secondary Cable Assemblies Series 95M Two Wire Extensions Cable Extensions



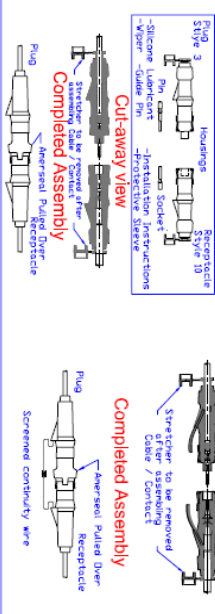
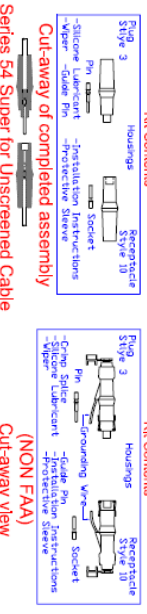
R is two individual #12 AWG (3.2mm²) Thermoplastic elastomer insulated conductors between wires, 25amp, 90°C
R is 6S 47 but #16 AWG (3.2mm²)
R is 2/12 AWG (3.2mm²) Thermoplastic elastomer insulated conductors with 2/12 AWG (3.2mm²) Thermoplastic elastomer insulated conductors between wires, 25amp, 90°C
R is 2/12 AWG (3.2mm²) Thermoplastic elastomer insulated conductors with 2/12 AWG (3.2mm²) Thermoplastic elastomer insulated conductors between wires, 25amp, 90°C
R is 2/12 AWG (3.2mm²) Thermoplastic elastomer insulated conductors with 2/12 AWG (3.2mm²) Thermoplastic elastomer insulated conductors between wires, 25amp, 90°C
R is 2/12 AWG (3.2mm²) Thermoplastic elastomer insulated conductors with 2/12 AWG (3.2mm²) Thermoplastic elastomer insulated conductors between wires, 25amp, 90°C

FAA CLASS B

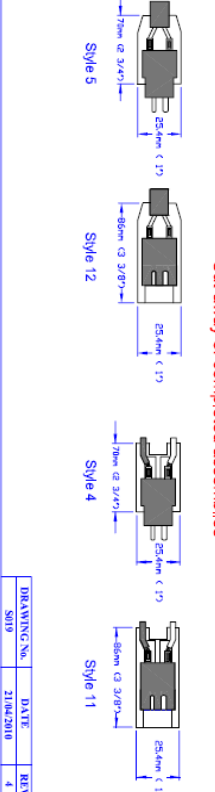
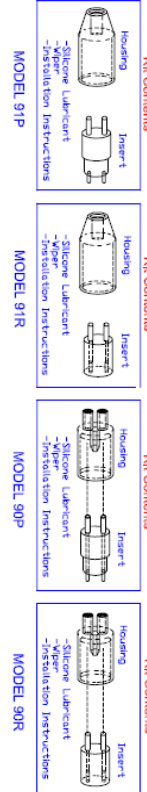
Field Applied Connectors

AMERACE
A Division of Thomas & Betts
120 Nashdene Road
Scarborough, Ontario M1V 2W3
www.amerace.com
TEL: (416) 292-9782
FAX: (416) 292-1514

Primary Connector Kits



Secondary Connector Kits



DRAWING NO.	DATE	REV
8019	21/04/2010	4