

## Busbar to Busbar

### Mold Information:

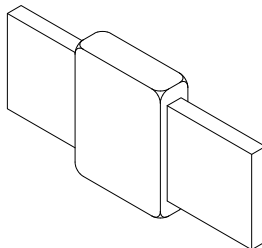
- Price Key is the **Bold Letter** in the Mold Part No.

### Required Tools & Accessories:

- MH1 - Handle for "B" Price Key Molds
- MH2 - Handle for "C" Price Key Molds

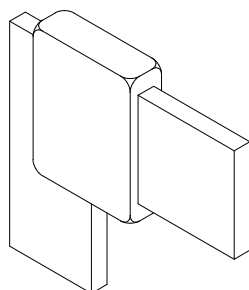
### Recommended Tools & Accessories:

- CCBRSH1 - Cable Cleaning Brush
- MCBRSH1 - Mold Cleaning Brush



## BB

(Horizontal Busbar Butt Splice,  
Busbar Face in Vertical Plane)



## BA

(Busbar 90°, Tap Down, Run  
Horizontal, Busbar Face in  
Vertical Plane)

### BB Connection Type

Busbar Size	Mold Part No.	Weld Metal	
		UltraShot	NUWTUBE
1/8 x 1 1/8 x 2	BB-181B BB-182B	US45 US90	NUWTUBE45 NUWTUBE90
3/16 x 1 3/16 x 2	BB-3161B BB-3162B	US65 US115	NUWTUBE65 NUWTUBE115
1/4 x 1 1/4 x 1-1/4 1/4 x 1-1/2	BB-141B BB-141.25B BB-141.5B	US90 US115 US150	NUWTUBE90 NUWTUBE115 NUWTUBE150
1/4 x 2 1/4 x 3 1/4 x 4	BB-142B BB-143C BB-144C	US200 US400 US500	NUWTUBE200 2-NUWTUBE200 2-NUWTUBE250
3/8 x 1 3/8 x 1-1/2 3/8 x 2 3/8 x 3	BB-381B BB-381.5B BB-382C BB-383C	US150 US250 US300 US500	NUWTUBE150 NUWTUBE250 2-NUWTUBE150 2-NUWTUBE250
1/2 x 1 1/2 x 2	BB-121B BB-122C	US200 US400	NUWTUBE200 2-NUWTUBE200

### BA Connection Type

Busbar Size	Mold Part No.	Weld Metal	
		UltraShot	NUWTUBE
1/8 x 1 1/8 x 2	BA-181B BA-182B	US45 US90	NUWTUBE45 NUWTUBE90
3/16 x 1 3/16 x 2	BA-3161B BA-3162B	US65 US115	NUWTUBE65 NUWTUBE115
1/4 x 1 1/4 x 1-1/4 1/4 x 1-1/2	BA-141B BA-141.25B BA-141.5B	US90 US115 US150	NUWTUBE90 NUWTUBE115 NUWTUBE150
1/4 x 2 1/4 x 3 1/4 x 4	BA-142B BA-143C BA-144C	US200 US400 US500	NUWTUBE200 2-NUWTUBE200 2-NUWTUBE250
3/8 x 1 3/8 x 1-1/2 3/8 x 2 3/8 x 3	BA-381B BA-381.5B BA-382C BA-383C	US150 US250 US300 US500	NUWTUBE150 NUWTUBE250 2-NUWTUBE150 2-NUWTUBE250
1/2 x 1 1/2 x 2	BA-121B BA-122C	US200 US400	NUWTUBE200 2-NUWTUBE200