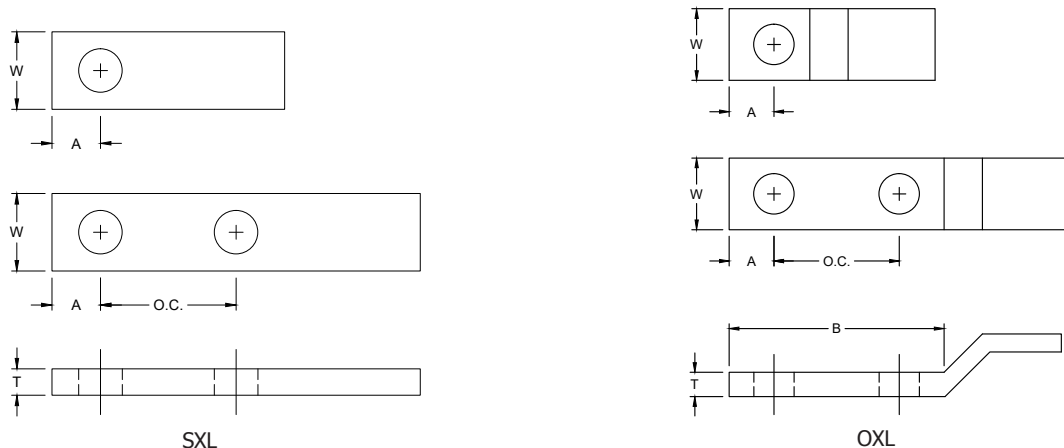


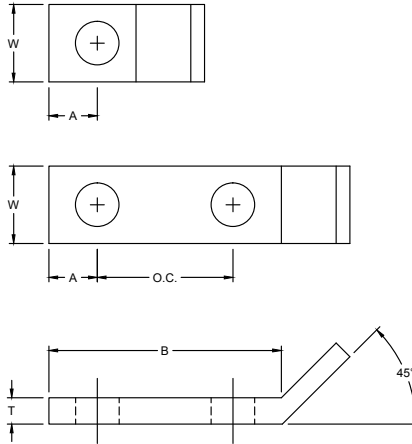
Tinned Copper Lugs Straight & Offset



Lug Size	Straight Part No.	Offset Part No.	No. of Holes	Screw Size	O.C. Dimension	T	W	A	B
1/8 x 1	SXL-181	OXL-181	1	3/8	---	1/8	1	1/2	7/8
	SXL-1812B	OXL-1812B	2	3/8	.75	1/8	1	5/8	3
	SXL-1812C	OXL-1812C	2	1/2	1	1/8	1	5/8	3
	SXL-1812D	OXL-1812D	2	1/2	1.75	1/8	1	5/8	3
3/16 x 1	SXL-3161	OXL-3161	1	3/8	---	3/16	1	9/16	1-1/8
	SXL-31612B	OXL-31612B	2	3/8	.75	3/16	1	5/8	3
	SXL-31612C	OXL-31612C	2	1/2	1	3/16	1	5/8	3
	SXL-31612D	OXL-31612D	2	1/2	1.75	3/16	1	5/8	3
1/4 x 1	SXL-141	OXL-141	1	1/2	---	1/4	1	5/8	1-1/8
	SXL-1412B	OXL-1412B	2	3/8	.75	1/4	1	5/8	3
	SXL-1412C	OXL-1412C	2	1/2	1	1/4	1	5/8	3
	SXL-1412D	OXL-1412D	2	1/2	1.75	1/4	1	5/8	3
1/4 x 1-1/2	SXL-141.5	OXL-141.5	1	5/8	---	1/4	1-1/2	3/4	1-1/2
	SXL-141.52B	OXL-141.52B	2	3/8	.75	1/4	1-1/2	5/8	3
	SXL-141.52C	OXL-141.52C	2	1/2	1	1/4	1-1/2	5/8	3
	SXL-141.52D	OXL-141.52D	2	1/2	1.75	1/4	1-1/2	5/8	3
1/4 x 2	SXL-1422B	OXL-1422B	2	3/8	.75	1/4	2	5/8	3
	SXL-1422C	OXL-1422C	2	1/2	1	1/4	2	5/8	3
	SXL-1422D	OXL-1422D	2	1/2	1.75	1/4	2	5/8	3
3/8 x 1-1/2	SXL-381.5	OXL-381.5	1	5/8	---	3/8	1-1/2	3/4	1-1/2
	SXL-381.52B	OXL-381.52B	2	3/8	.75	3/8	1-1/2	5/8	3
	SXL-381.52C	OXL-381.52C	2	1/2	1	3/8	1-1/2	5/8	3
	SXL-381.52D	OXL-381.52D	2	1/2	1.75	3/8	1-1/2	5/8	3
3/8 x 2	SXL-382	OXL-382	1	5/8	---	3/8	2	1	2-1/8
	SXL-3822B	OXL-3822B	2	3/8	.75	3/8	2	5/8	3
	SXL-3822C	OXL-3822C	2	1/2	1	3/8	2	5/8	3
	SXL-3822D	OXL-3822D	2	1/2	1.75	3/8	2	5/8	3

For Use with LE Style Molds on Page 287.

Tinned Copper Lugs Bent & Bent J



Lug Size	Bent Part No.	No. of Holes	Screw Size	O.C. Dimension	T	W	A	B
1/8 x 1	BXL-181	1	3/8	---	1/8	1	7/16	7/8
	BXL-1812B	2	3/8	.75	1/8	1	5/8	3
	BXL-1812C	2	1/2	1	1/8	1	5/8	3
	BXL-1812D	2	1/2	1.75	1/8	1	5/8	3
3/16 x 1	BXL-3161	1	1/2	---	3/16	1	5/8	1-1/4
	BXL-31612B	2	3/8	.75	3/16	1	5/8	3
	BXL-31612C	2	1/2	1	3/16	1	5/8	3
	BXL-31612D	2	1/2	1.75	3/16	1	5/8	3
1/4 x 1	BXL-141	1	1/2	---	1/4	1	5/8	1-1/4
	BXL-1412B	2	3/8	.75	1/4	1	5/8	3
	BXL-1412C	2	1/2	1	1/4	1	5/8	3
	BXL-1412D	2	1/2	1.75	1/4	1	5/8	3
1/4 x 1-1/2	BXL-141.5	1	5/8	---	1/4	1-1/2	3/4	1-1/2
	BXL-141.52B	2	3/8	.75	1/4	1-1/2	5/8	3
	BXL-141.52C	2	1/2	1	1/4	1-1/2	5/8	3
	BXL-141.52D	2	1/2	1.75	1/4	1-1/2	5/8	3

For Use with LE Style Molds on Page 287.

Lug Size	Bent J Part No.	No. of Holes	Screw Size	O.C. Dimension	T	W	A	B
1/8 x 1	JXL-1813/8	1	3/8	---	1/8	1	5/8	1-1/4
	JXL-181	1	1/2	---	1/8	1	5/8	1-1/4
	JXL-1812C1/4	2	1/4	1	1/8	1	5/8	3
	JXL-1812C3/8	2	3/8	1	1/8	1	5/8	3
	JXL-1812D	2	1/2	1.75	1/8	1	5/8	3
3/16 x 1	JXL-3161	1	1/2	---	3/16	1	5/8	1-1/4
	JXL-31612D	2	1/2	1.75	3/16	1	5/8	3

For Use with LBJ Style Molds on Page 288.

